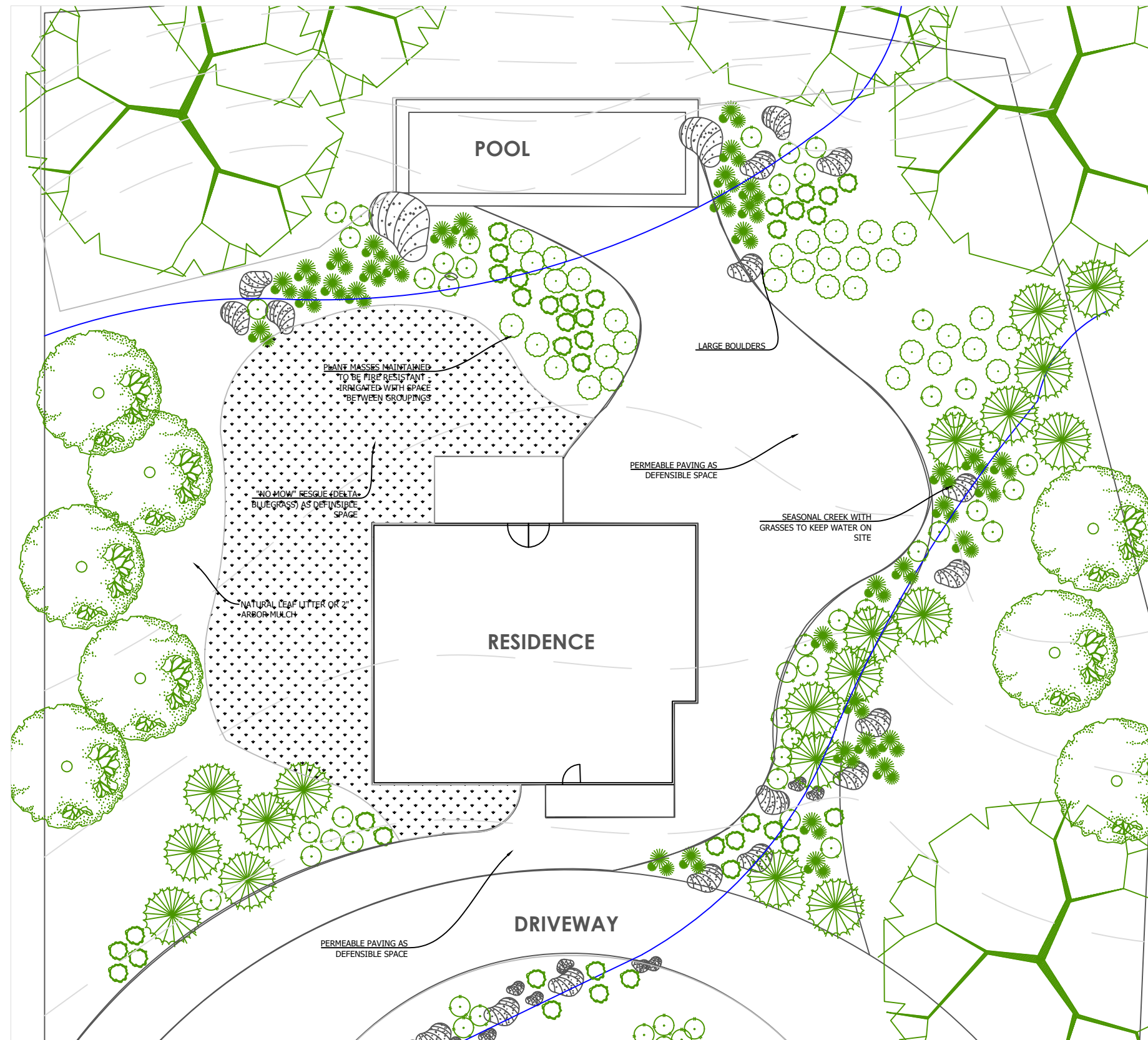


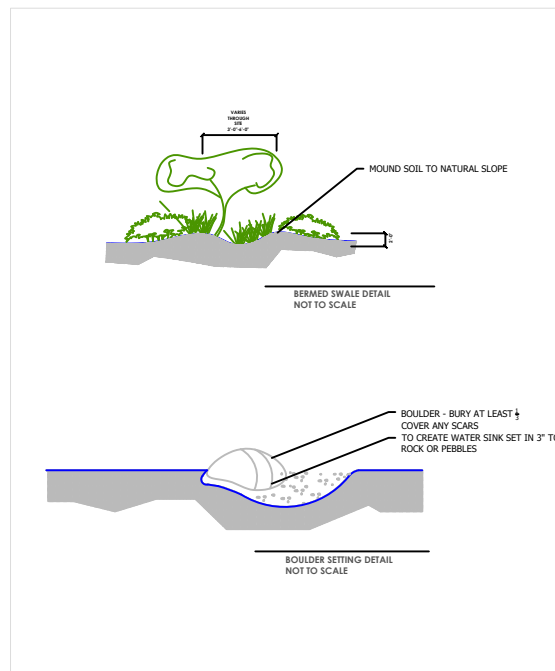
# California Native Plant Fire Safer Garden



PLAN VIEW

## PLANT LEGEND

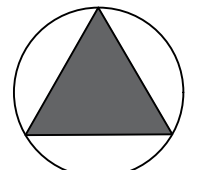
- 
**EXISTING TREES**  
 QUERCUS AGRIIFOLIA (COAST LIVE OAK)  
 QUERCUS LOBATA (VALLEY OAK)  
 QUERCUS KELLOGGII (BLACK OAK)
- 
**SMALL SCALE TREES AND SCREEN SHRUBS**  
 CEANOTHUS SP. (CALIFORNIA LILAC)  
 MYRTICA CALIFORNICA (WAX MYRTLE)  
 LYONOTHAMNUS ASPLENIIFOLIUS ( ISLAND IRONWOOD)
- 
**GRASSES**  
 DESCHAMPسيا CAESPITOSA (HAIR GRASS)  
 FESTUCA CALIFORNICA (CALIFORNIA FESCUE)  
 MUILENBERGIA RIGENS (DEER GRASS)
- 
**GRASSES**  
 DESCHAMPسيا CAESPITOSA (HAIR GRASS)  
 FESTUCA CALIFORNICA (CALIFORNIA FESCUE)  
 MUILENBERGIA RIGENS (DEER GRASS)
- 
**FLOWERING PERENNIALS - MIX WITH GRASSES ALONG SIDES OF SWALES**  
 MIMULUS AURANTIACUS (MONKEY FLOWER)  
 SALVIA 'WINNIFRED GILLMAN' (PURPLE FLOWERING SAGE)  
 SALVIA 'BEE'S BLISS' (BEE'S BLISS SAGE)
- 
**MIXED PERENNIALS**  
 HEUCHERA MAXIMA (ALUM ROOT)  
 IRIS LONGIPETALA (LONG PETALED IRIS)  
 MONARDELLA VILLOSA (COYOTE MINT)  
 POTENTILLA GRACILIS (CINEQUEFOIL)  
 SIDALCEA MALVIFLORA (CHECKERBLOOM)



## DETAILS



**FIRE SAFER LANDSCAPE  
 FOUNTAIN GROVE OPEN SOURCE DOCUMENT  
 SANTA ROSA, CA**



NORTH

PLANTING PLAN

DATE  
APRIL, 2018

SCALE  
1" = 8"